

How Are Stars Like People?

Photographs

This document contains the following handouts:

- A photograph of the Pleiades (an open star cluster)
- A photograph of M3 (a globular star cluster)
- A photograph of a crowd of people (most of whom are young)
- A photograph of a different crowd of people (most of whom are old)

These photographs should be printed out on color paper or distributed electronically, in order for students to be able to compare them side by side.

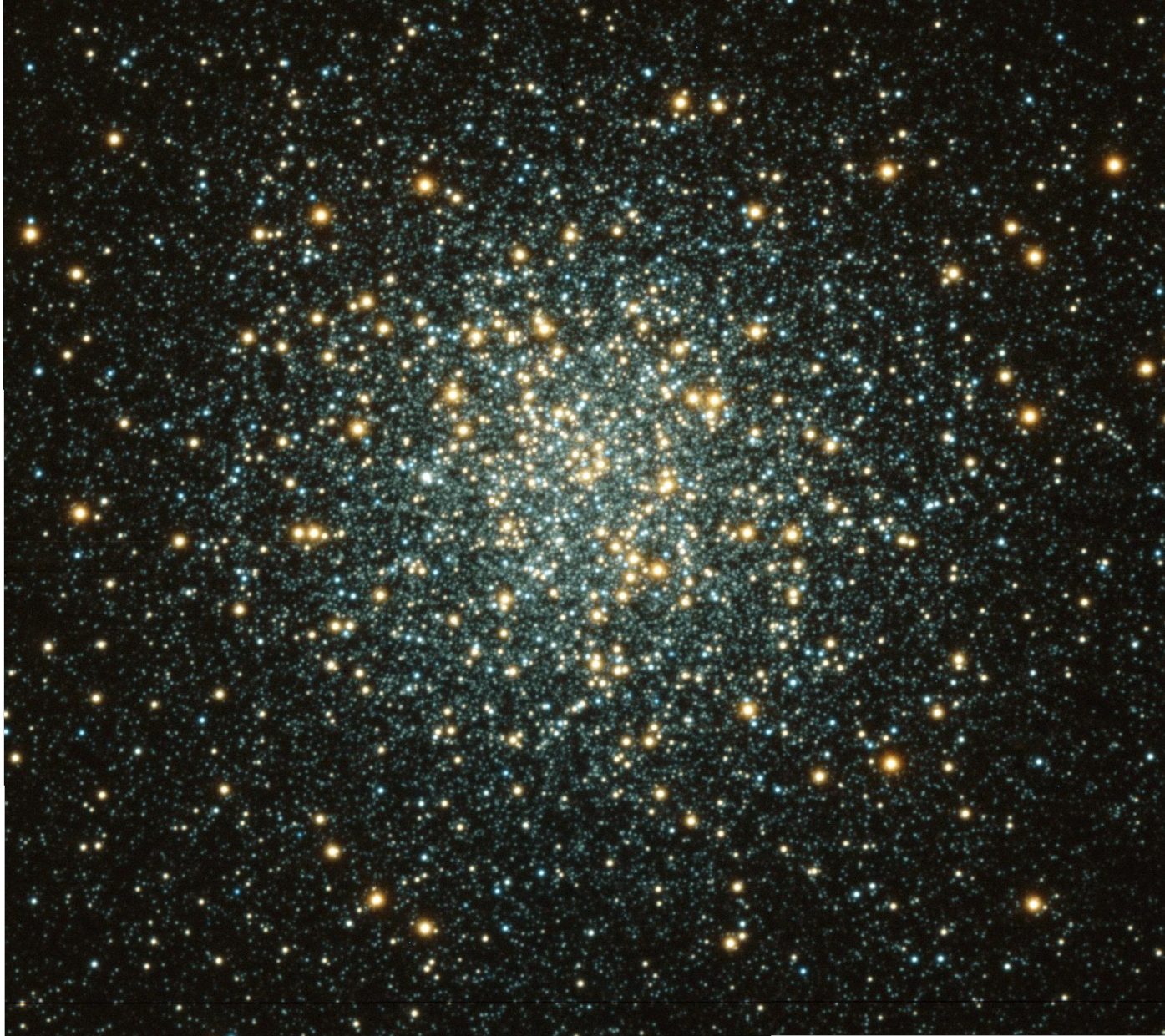
This material was developed through the **Cornell Science Inquiry Partnership** program (<http://csip.cornell.edu>), with support from the National Science Foundation's Graduate Teaching Fellows in K-12 Education (GK-12) program (DGE # 0231913 and # 9979516) and Cornell University. Any opinions, findings, and conclusions or recommendations expressed in this material are those of the author(s) and do not necessarily reflect the views of the NSF.

The Pleiades (Open Cluster)



Credit & Copyright: Robert Gendler
(antwrp.gsfc.nasa.gov/apod/ap031227.html)

M3 (Globular Cluster)



Credit & Copyright: S. Kafka & K. Honeycutt, Indiana University/WIYN/NOAO/NSF
(antwrp.gsfc.nasa.gov/apod/ap030915.html)

Crowd #1



Credit: Wikipedia

(en.wikipedia.org/wiki/Image:Greenstage_bigdayout_crowd.jpg)

Crowd #2



Credit: Office of the Democratic Whip, Steny Hoyer
(snipurl.com/humans)